

TE KĀPEHU WHETŪ

PĀNUI Pre - Term 1

24/01/25

TE KĀPEHU WHETŪ

"Nau mai ki te tau 2025, ā, nau mai hoki mai ki te kura ākuanei!
Ko te tumanako i pai tō koutou hararei, ā, i pārekareka hoki ki te wā whakatā.
Kia kaha, kia māia, kia manawanui mō te tau hou e haere ake nei!
Mā te mahi tahi e whai hua ai tātou katoa.
Kia pai ngā whakaritenga mō tō hoki mai, e ākonga mā!"

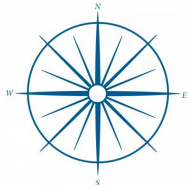


It's nearly that time to head back to Kura!!!
Paerangi (Yr11-13) only - Friday 7th Feb @ Dent St
All Ākonga (Yr1 -13) - Monday 10th Feb, 9am @ Maumahara

NOTE: We are holding an info hui for new whanau and whanau wanting to know more about the opening of our new Paerangi (Yr11-13) Kura Hourua in Tāmaki
This Tuesday 28th Feb, 10am - 11am @ Maumahara

Please share with those whanau who might want to know more!!!

Kapai
Whaea Rae



TE KĀPEHU WHETŪ

PĀNUI Pre - Term 1

24/01/25

KEY DATES FOR TERM 1 2025

Next Week:

Whanau Information Hui

Tuesday 28th Jan - 10am @ Maumahara

Week 1:

Paerangi First day back

NCEA Course sign up

Friday 7th Feb - 9am @ 177 Lower Dent St

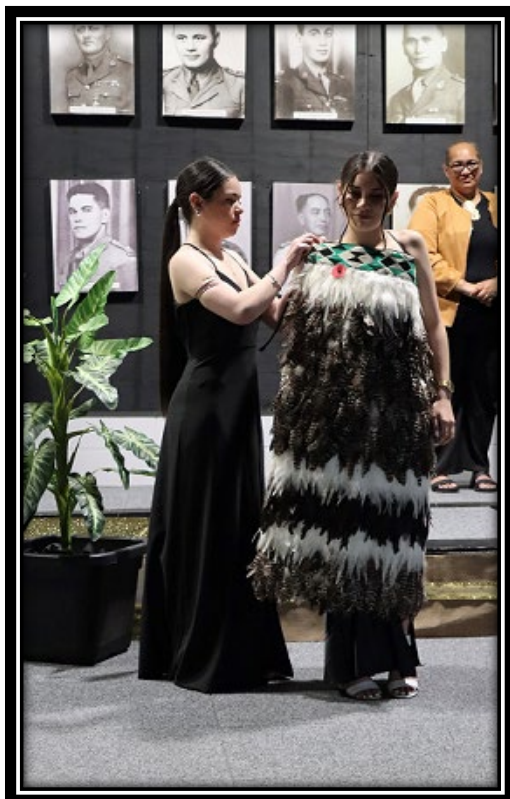
Week 2:

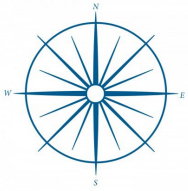
All ākonga are back

Monday 10th Feb – 9am @ Maumahara

Powhiri for new staff, whanau and ākonga @ 9.30am

Paenuku will return by bus to Tarewa





PĀNUI Pre - Term 1

KAUPAPA



We believe passionately in our culture, our people, our ākonga, and we know that through hard work, commitment, and focused support they will achieve within the Kura and beyond. We do this hereby acknowledging the 28 Māori Battalion and the price paid for citizenship, so that ‘we’ can “Navigate Māori Futures”.

To do this we commit to success in all its forms:

Kia Māori - Be Māori – Be

An education that validates Māori knowledge and ways of learning.

Kia Mātau – Be Knowledgeable – Know

Encouraging innovation, inquiry, the development of specialised knowledge and skills.

Kia Tū Rangatira Ai – Be Rangatira – Do

Development of strong character and personal excellence, living with mana.

Nā

Raewyn Tipene

POUHERE