



PĀNUI Term 2 Week 7

14/06/25

TE KĀPEHU WHETŪ

Kia ora e te whanau.....A little reminder of our events for Matariki

Mānawatia a Matariki me Puanga

Tuesday 17th June – Art Expo

Time: 5.30 – 7.00pm

Venue: Maumahara

Wednesday 18th June – Wearable Arts Hiko

Time: 5.30 – 7.00pm

Venue: Paetawhiti

Thursday 19th June – Hautapu + Ahi

Time: 6.00am – Mihi whakatau & 9x karakia

7.00am – View Displays

8.00am – Kai & cake ceremony

9.00am - 10 Year Celebration of Paenuku

10am – 12noon – Sports rotation

12noon – Karakia whakamutunga & Wā Kainga

HAUORA:

We had the privilege of welcoming **NgatiHine Health Trust** into our kura last Monday. We have been working with their staff for awhile developing a Whanau Support Service that can be offered through our Kura.

With the health system becoming harder to access, we wanted to see how we could support our akonga, staff and whānau in accessing hau ora services . See attached panui. Bookings through Whaea Karlene or Whaea Kerrian.

"Tē tōia, tē haumatia."

Kia pai to wiki

Whaea Rae

POUHERE

Matariki

Te Kāpehu Whetū

Invite you to attend our 3 day Matariki celebration
2025 and 10 year anniversary for Paenuku

Art Exhibition

Tuesday 17 June
5.30pm - 7.00pm
Te Whare o Maumahara

Wearable Arts

Wednesday 18 June
5.30pm - 7.00pm
Te Whare o Paetawhiti
Reyburn Lane Entrance

Matariki Dawn Ceremony/Hautapu Paenuku 10th Anniversary.

Thursday 19 June
6.00am - 12.00pm ki Paenuku
6.00-7.00am Matariki Fire Ceremony
7.00 - 8.00am Paenuku Classrooms Displays
8.00 - 9.00am Hangi Breakfast
9.00 - 10.00am Mihimihi - Paenuku 10 year anniversary
10.00 - 12.00pm Sports Rotations
12.00pm - Karakia Whakamutunga, Wa Kainga



PĀNUI Term 2 Week 7

14/06/25



NGĀTI HINE HEALTH TRUST

Free Whānau Support Services

TE KAPEHU WHETU

NEXT VISIT: 23RD JUNE | 9:00AM - 2:30PM

Brought to you by Ngāti Hine Health Trust & Whānau Ora

GP HEALTH CHECKS – MONTHLY

Free general health check-ups to keep you and your tamariki well.

NURSE CHECKS – MONTHLY

Health monitoring, wellness checks, and preventative care with a friendly, qualified nurse.

WHANAU ORA VISITS – FORTNIGHTLY

One-on-one support to help with:

- Goal planning
- Housing needs
- Counselling services
- MSD/Work and Income advocacy
- Employment and job-seeking support
- Interservice referrals

OLYMPICS PATHWAY PROGRAMME

For tamariki and rangatahi with big dreams – find out how we can help them pursue sporting excellence!

No appointment needed – all whānau welcome.

For more info, contact the school office or talk to your kaiako.

He waka eke noa | We're all in this together



PĀNUI Term 2 Week 7

14/06/25

KEY DATES FOR TERM 2

This week:

17-19 th June (Tue-Thurs)	TKW Matariki celebrations – Whole Kura
19 th June (Thurs)	Tuakana Progress reports to whanau
20th June (Friday)	MATARIKI - Public Holiday
20th June (Friday)	Tuakana Kapa Haka Practise 10am-5pm
21st June (Saturday)	Re-launch the InnoNative Store @Town Basin Come along 10am – 4pm to check it out!! A few senior ākonga doing retail work experience

Week 9:

23 rd June	RFL - Tuakana
24-26 th June (Tues-Thur)	History trip to Rangiriri – Paetata
27 th June	Seafood Cooking Course NorthTec (Yr11-12)

27th June (Friday) Last Day Term 2

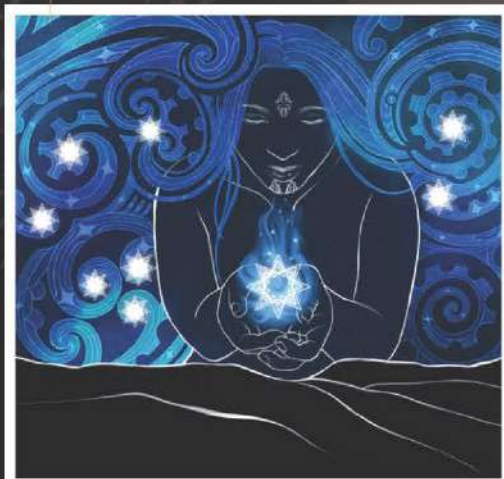
Week 1 Holidays (Wed-Fri) Tuakana Kapa Haka training 10am-5pm

Week 2 Holidays (Mon-Thurs) Tuakana Kapa Haka training 10am-5pm

Term 3 Day 1 (Mon) 14th July

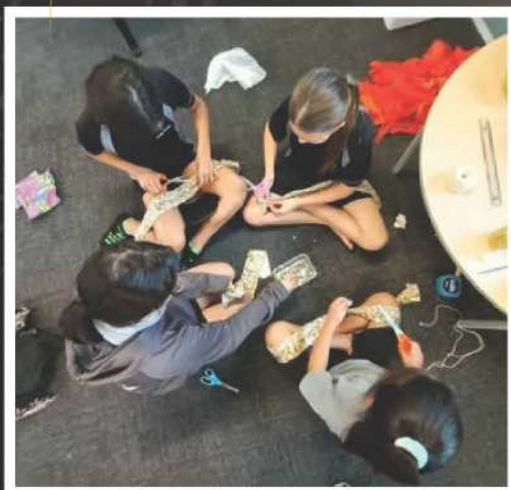
PAENUKU

WIKI #7 T2, 2025



Kei te whakakotahi tonu matou i nga akoranga ki te Taumata. Anei a Mangoroa e tū anō ana, e kawea ana i nga mahi me te māia me te manawanui e tipu haere ana ia wiki.

TE PAE-TŪROA



E manawa nui ana a Mangoroa ki te whakaatu i te whanaketanga o tō ratou reo Māori me ōna tikanga ki mua i te kura katoa.



TE KĀPEHU WHETŪ

PĀNUI Term 2 Week 7

14/06/25



PAENUKU WĀNANGA Te Whakatau atu i ngā mahi toi mo te wiki o MATARIKI





TE KĀPEHU WHETŪ

PĀNUI Term 2 Week 7

14/06/25



PAENUKU WĀNANGA
Te Whakataua atu i ngā mahi toi mo
te wiki o MATARIKI





TE KĀPEHU WHETŪ

PĀNUI Term 2 Week 7

14/06/25



TUPUĀNUKU

Te whetū o te tupu kai.
Anei ā tātou tamariki e
neke ana i ā rātou tipu ki
ngā ipu rahi ake, hei tipu,
hei ora mō anamata.



TE KĀPEHU WHETŪ

PĀNUI Term 2 Week 7

14/06/25



TE REO TOI ATAATA



Ngā Taepapa Whakaahua
a Te Kei

Kei te waihanga a Te Kei i
ngā anga mō ā rātou
whakaahua ā-tangata –
he toi, he hiringa, he
auahatanga!





TE KĀPEHU WHETŪ

PĀNUI Term 2 Week 7

14/06/25



TE AUAKA MAHI TOI



Ngā Taepapa Whakaahua
a Te Kei

Kei te waihanga a Te Kei i
ngā anga mō ā rātou
whakaahua ā-tangata –
he toi, he hiringa, he
auahatanga!





TE KĀPEHU WHETŪ

PĀNUI Term 2 Week 7

14/06/25



WHAKARITE KIA RITE!!!



*Tu motuhake toā nei
ana nga tama toa i
nga akoako a
Matua Tumai.*



1. Te pakari o te hinengaro mō te tipu o te tinana
2. Te waihanga i ngā tikanga e ū tonu ai
3. Hei whakarite mō ngā wero o te ao tūturu
4. Te whakapakari i te mana o te tangata
5. Te hapori me te tautoko
 - Mā te whakawhiti i ngā tauwhatinga tinana ka whakapono te tangata ki tōna ake kaha.
 - Ka whakaatu te manawanui he nui ake te kaha o te tangata i tāna i whakaaro ai.
 - Ka ako te māia kia kitea ko te uauatanga he wāhi mō te tipu, ehara i te ngoikore.





PĀNUI Term 2 Week 7

14/06/25

REMINDERS - REMINDERS - REMINDERS

NGA KARERE MANATU

MIHI WHAKATAU

We are humbly excited to have our new pouako
start with us on Monday 16 June.

Nau mai Whaea Kathy Shelford
ki te whare o Paenuku, Te Kāpehu Whetū

MATARIKI & PUANGA

Check the beautiful MATARIKI poster for all the details
for next weeks TKW MATARIKI EVENT!!!

BASKETBALL - Please keep an eye out for
this weeks Basketball Draw!!!

2.45pm - KARAKIA WHAKAWĀTEA

We are having lots of tamariki being collected during this time.
Please allow our tamariki to complete their kura day with final
karakia. Nō reira, nei rā te kupu whakamīhi ki koutou,
otirā, ki a tātou katoa.

WHĀNAU MĀ!!!

CHECK YOUR EMAILS PLEASE!!!

**ALL EVENTS, PĀNUI ARE
SENT OUT VIA EMAIL!**



PĀNUI Term 2 Week 7

14/06/25

PAETATA

PAETATA

TE KĀPEHU WHETŪ WEEK 7 PĀNUI

PANUI MO TE WIKI TUAWHITU

Kia ora koutou,

As we quickly approach Matariki, Week 8, and the end of Term 2, Paetata is still buzzing with exciting kaupapa to wrap up the term.

This week, our ākonga have been putting the finishing touches on their artistic creations, refining their karakia, and sharpening their eye for detail in preparation for our kura-wide Matariki celebrations next week. Over three days, we'll be celebrating the return of Matariki and Te Waka o Rangi, a time to reflect, reset, and reconnect.

We look forward to showcasing the creativity, learning, and wairua our ākonga have poured into their mahi.

Mānaakitia mai a Matariki!

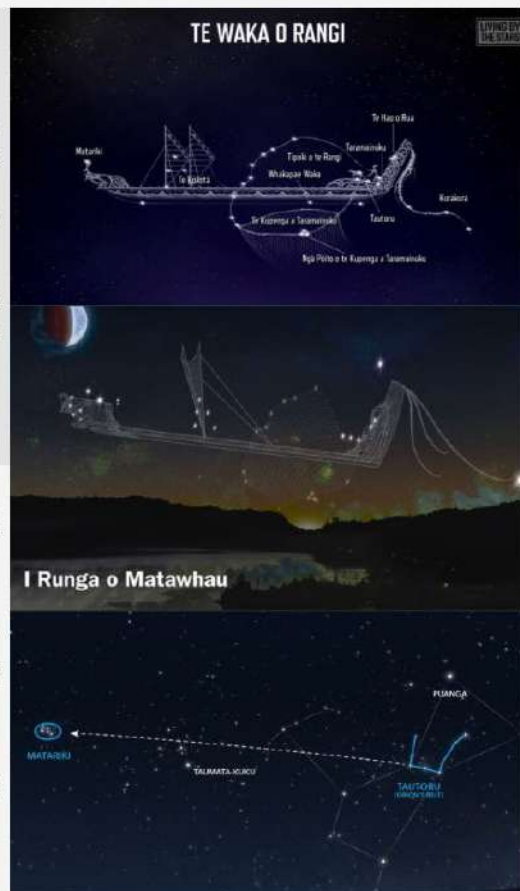
IMPORTANT MATARIKI REMINDER:

We'd like to acknowledge the following ākonga who will be leading karakia for each of the whetū of Matariki. These students will represent their respective stars and share their karakia as part of our dawn ceremony:

All students listed below need to be at Paenuku 78 Tarewa Road Morningside by 5:30am on Thursday, 19 June to prepare for their karakia roles and positions.

- Waerea: Te Ao Nui, Paetata
- Tupu-ā-nuku: Paenuku
- Tupu-ā-rangi: Paenuku
- Waiti: Natalie, Paerangi
- Waitā: Tyrecce, Paerangi
- Waipunarangi: Xyvjarn, Paetata
- Ururangi: Te Koharua, Paetata
- Hiwa-i-te-rangi: Paetawhiti
- Pōhutukawa: Moanarua, Paetawhiti
- Matariki (Closing Karakia): Harlem, Paetata

Mānawatia a Matariki! ✨



"MATARIKI MĀ PUANGA, E ARA E! HE TOHU MŌ TE TAU HOU, HE MARAMATANGA MŌ TE ORANGA."
MATARIKI AND PUANGA RISE – SIGNS OF THE NEW YEAR, A LIGHT FOR OUR WELLBEING.



PĀNUI Term 2 Week 7

14/06/25

PAETATA

KIA MĀTAU - KIA MĀORI - KIA TŪ RANGATIRA AI

WEEK 8/9 REMINDERS!

Matariki WEEK 8

Tuesday 17 June: Art Exhibition held in Maumahara
5.30–7.00pm

Wednesday 18 June: Wearable Arts Fashion Show held in
Paetawhiti Whare
5.30–7.00pm

Thursday 19 June: Matariki Dawn Ceremony/Paenuku 10th
year Anniversary held at Paenuku 78 Tarewa Road,
Morningside
6.00am – 12.00pm

Students doing karakia need to be there at 5.30am
This will include, dawn fire ceremony, classroom displays,
hangi breakfast, kōrero and cake ceremony, whānau sports
rotation.

Friday 20 June:

Matariki Public Holiday Observed

Rangiriri Waikato WEEK 9

Monday 23 June:

Normal school day

Tuesday 24 June:

Paetata will be departing for Rangiriri at 10am from Paetata
Whare. We will travel to Maurea Marae Rangiriri where we will
stay for the 2 nights.

Wednesday 25 June:

Rangiriri Trench Tour 9.30am

Paetata will be taken on a 2 hour guided tour of the newly
built Rangiriri trenches of Ngaati Naho.

Thursday 26 June:

10am depart Rangiriri and return to Whangārei.
ETA 2.30pm at Paetata.

Friday 27 June:

Normal school day – **LAST DAY OF THE TERM**

A gear list will be sent home next week of what your child will
need to bring. We will be travelling down in 3 vans. 4 Pouako
and Pouawhi and 2 whānau awhi.

KO TE KAI A TE RANGATIRA, HE MANAAKI I TE TANGATA

The food of a leader is to care for the people.

PAETAWHITI

Term 2 Week 7 Paetawhiti

KŪI MĀORI:
WE VALIDATE MĀORI
KNOWLEDGE AND VALIDATE
MĀORI WAYS OF LEARNING WE
HAVE A STRONG SENSE OF
IDENTITY.

KŪI MĀTAU:
WE EMPOWER OUR ĀKONGA TO
DEVELOP THEIR APPROACH TO
LEARNING THAT WILL ALLOW
THEM TO ACHIEVE GOALS
THAT THEY SET
THEMSELVES

KŪI TŪ RANGATIRA AI:
WE PROVIDE AN
ENVIRONMENT FOR THE
DEVELOPMENT OF STRONG
CHARACTER AND PERSONAL
EXCELLENCE SO THAT ĀKONGA
UNDERSTAND HOW TO CONDUCT
THEMSELVES HONOURABLY IN
THE WORLD.



Kia Mātau – Kia Māori - Kia Tu Rangatira Ai

Week 7 Already!

It's hard to believe we're in Week 7 already—what a busy and productive term it's been! Paetawhiti ākonga have completed their literacy and numeracy assessments, showing great focus and determination.

Tau 10 ākonga have also been buzzing with excitement over their digital technology opportunities through NGEN—watch this space for more!

We're also looking forward to sharing the incredible mahi toi and wearable arts our ākonga have been creating for Matariki. These will be showcased to whānau in Week 8—ka rawe!



Paetawhiti Term 2 Week 7

KIŌ MĀORI:
WE VALIDATE MĀORI
KNOWLEDGE AND VALIDATE
MĀORI WAYS OF LEARNING. WE
HAVE A STRONG SENSE OF
IDENTITY.

KIŌ MĀTAU:
WE EMPOWER OUR ĀKONGA TO
DEVELOP THEIR APPROACH TO
LEARNING THAT WILL ALLOW
THEM TO ACHIEVE GOALS
THAT THEY SET
THEMSELVES.

KIŌ TŪ RANGATIRA AI:
WE PROVIDE AN
ENVIRONMENT FOR THE
DEVELOPMENT OF STRONG
CHARACTER AND PERSONAL
EXCELLENCE SO THAT ĀKONGA
UNDERSTAND HOW TO CONDUCT
THEMSELVES HONOURABLY IN
THE WORLD.



Kia Mātau – Kia Māori- Kia Tu Rangatira Ai

Weekly sharing of our academic learning in te taiao - The fascinating world of Māori navigation, exploring how our tupuna traversed vast ocean distance without modern aids.

Boston and Matu Rangi- How did Maori navigate across the pacific?

Maori were skilled navigators who used sophisticated traditional knowledge to travel long distances across the Pacific Ocean long before the invention of modern navigation tools. They relied on wayfinding techniques passed down orally through generations, using the stars, ocean swells, wind patterns, cloud formations, and the flight paths of birds to guide their waka hourua.

John, Julie, Kahurangi- How did Māori navigate across the Pacific?

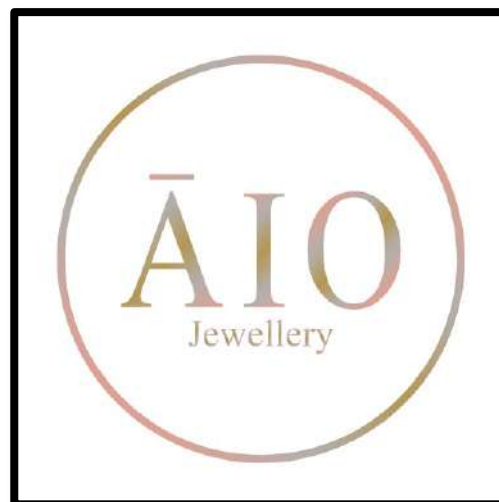
In the early 1200's Māori started voyaging from all across Polynesia, a common place of origin is known as Hawaiki. Māori used the natural environment to find their way across the ocean using things like currents and winds. A main tool used in navigating is te kapehu whetu or the star compass.



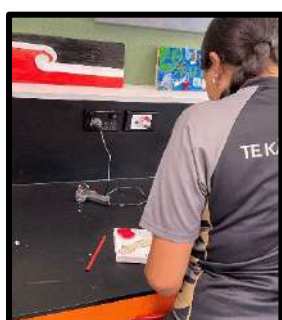
PAERANGI

Congratulations to **Natalie, Ngākupenga, and Narima** of **Āiō Jewellery**, who were selected as one of eight Northland teams to present their business pitch at the Young Enterprise Mid-Year Celebration held at NorthTec. The team showed great courage in sharing their kaupapa in front of an audience of over 50 people, including students from other colleges.

It was also announced that both **Āiō Jewellery** and **Ngā T Clothing**—led by **Julius, Tyrecce, and Jerome**—have been awarded seed funding through the latest Northland Young Enterprise round. While funding amounts are to be confirmed, this support will help them bring their products to life, just in time for the YES Northland Trade Fair at the Kerikeri Markets in August.



A sneak peak at the Year 12 and 13 art pieces for Matariki week



KAUPAPA



We believe passionately in our culture, our people, our ākonga, and we know that through hard work, commitment, and focused support they will achieve within the Kura and beyond. We do this hereby acknowledging the 28 Māori Battalion and the price paid for citizenship, so that 'we' can "Navigate Māori Futures".

To do this we commit to success in all its forms:

Kia Māori - Be Māori – Be

An education that validates Māori knowledge and ways of learning.

Kia Mātau – Be Knowledgeable – Know

Encouraging innovation, inquiry, the development of specialised knowledge and skills.

Kia Tū Rangatira Ai – Be Rangatira – Do

Development of strong character and personal excellence, living with mana.

Nā

Raewyn Tipene

POUHERE