

### TE KĀPEHU WHETŪ

**Kia ora e te whānau,**

**Term 4 is coming to a close in two and half weeks** but still plenty to complete. We had a fantastic Promotions course for the Academy last week and this week we had the Takawaenga (Paetata/Paetawhiti) Academy Taster programme at Cassino Lines, Parua Bay and Whaea Petina took all the kōhine out for the Mareikura Rising programme out Mokau.

We had an amazing Graduation dinner last Friday and now our Tuakana ākonga have left the building!!

**But we aren't over yet:**

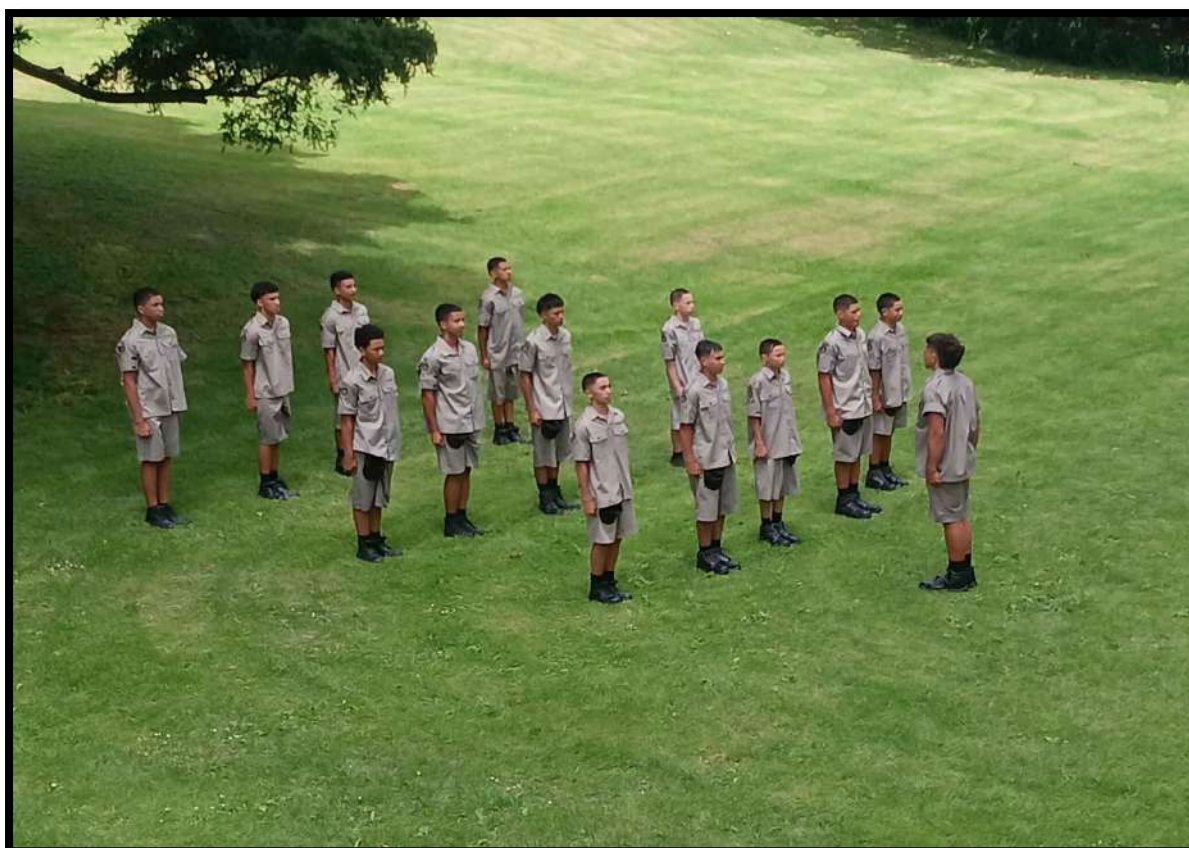
- Paenuku is off to Rainbows End tomorrow morning for year end of year trip. Please have ākonga at kura by 8am.
- Then Paenuku have their Rā Whakanui, celebration of our ākonga, this coming Friday. Please come and celebrate with us.
- The Iron Maori teams are off to Auckland this weekend to compete.
- Paetata/Paetawhiti have their prizegiving on the 12<sup>th</sup>.



**Mareikura Rising – Paetata/Paetawhiti Kōhine climbed Huruiki**



**Academy Taster programme for Paetata/Paetawhiti tama**



**Academy Promotions Course**



## PĀNUI Term 4 Week 8

29/11/2025

### KEY DATES FOR TERM 3

**Haerenga ki Tamaki – Paenuku**

**Mon 1<sup>st</sup> Dec**

Rainbows End, please be at kura by 8.00 am

**Rā Whakanui – Paenuku**

**Fri 5<sup>th</sup> Dec**

**10 am to 2 pm**

**Iron Māori – Tamaki**

**Sat 6<sup>th</sup> & 7<sup>th</sup> Dec**

**Prize Giving - Yrs 7 to 10**

**Fri 12<sup>th</sup> Dec**

**Paetata & Paetawhiti**

**Graduation Yr8**

**Mon 15<sup>th</sup> Dec**

**Whangarei Theatre Company**

**Last Day of Kura for 2025**

**Wed 17<sup>th</sup> Dec**

**Kia pai to wiki**

**Whaea Rae**

**POUHERE**



## PĀNUI Term 4 Week 8

29/11/2025



NGĀTI HINE HEALTH TRUST

# Free Whānau Support Services MOKOPUNA KI TAREWA

78 Tarewa Rd, Morningside, Whangarei 0110

**Final clinics for the year**

**1 DECEMBER 2025 | 12:00 PM - 4:00 PM**

**1 DECEMBER 2025 | 12:00 PM - 4:00 PM**

### GP HEALTH CHECKS

Free general health check-ups to keep you and your tamariki well.

### NURSE CHECKS

Health monitoring, wellness checks, and preventative care with a friendly, qualified nurse.

**No appointment needed – all whānau welcome.**

**For more info, contact the school office or Orson Misimake  
027 293 9564**

## PAENUKU

*Paenukū Tāwhārautia, Pāenukū wānanga,  
Pāenukū hūhūa.*

Kia Māori,  
Kia Mātau,  
Kia Tū  
Rangatira Ai

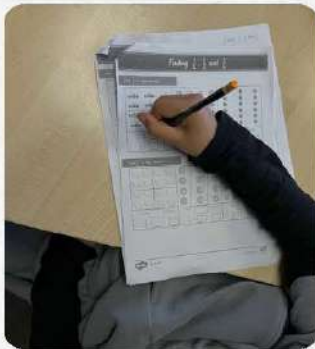


Manawa mai te  
pūkaha o te  
whakairoiro o  
Rēhia, manawa  
mai te pūkaha o  
Tānerore, kia eke  
ki te ihiihi o  
Ngā Puhi.



**Ko au te whare,  
ko te whare  
ko ahau...**





Tukua kia  
tū takitahi  
ngā whetu  
o Paenuku  
wānanga

*Tarānga whakarongo, kōrero mākohia, tinana  
mauri tau.*

Kua pakari haere ngā akoranga mō tātou ō Rangi  
matawhāiti, ō Rangi matawhānui. Kua whakatō ā  
kahuwai-ā-rangi hei whakaruruhau mātauranga,  
ko koe hoki te hua o te kākani i whakatōhia.





TE KĀPEHU WHETŪ

## PĀNUI Term 4 Week 8

29/11/2025



KUA REWA TE

AIHIKIRIMI !!

*Ka ora te aihikīrimī.*

*Ka ora a*

*Papatūānuku.*



Retireti takapare,  
Retireti takapau,  
Hīteki, kōtore  
Hītoki, kōtiti  
Takapore, takapore  
Uenuku mutungakore  
HARAMAI RĀ HI!



### PAENUKU KI TE MUTUNGA O TE ĀNIWANIWA

**YAAAAY!!! WE ARE READY TO GO!!!!**

A reminder that PAENUKU is headed to Rainbows End on

**Monday 1 December, 2025!!!**

All ākonga need to be at kura

**NO LATER THAN 8am SHARP!!**

**IMPORTANT:** Please make sure they wear their...  
**BLACK PAENUKU TAPATORU SHIRT, or BLACK TKW P.E SHIRT**  
**BLACK CLOSED SHOES**

Make extra kai for morning tea & Wai Māori!!!

Our estimated time of arrival home is between 7.30-8pm!



*E pōwhiri whānuitia ana e mātou  
i tō tātou whānau kia tae pai mai  
ki te whakanui i ā tātou tamariki mokopuna.*

NAU MAI...  
TAUTI MAI RA

KI TE HUI WHAKANUI  
O PAENUKU 2025

RAMERE 5 HAKIHEA 2025  
10AM - 2PM  
KI PAENUKU



*Whakanui i ngā huhua pukumahi, mīharo,  
me te tuari tahi i tēnei hui whakahirahira.*

**To celebrate our amazing tamariki and end 2025 with a bang, we are doing 1 last quick raffle.**

## LOTS OF PRIZES UP FOR GRABS

x2 7inch Tablet  
Smart Watch  
Mini Solar Panel  
x4 A4 - Mana prints  
Korowal on Canvas  
Resin Tino Hei Tiki  
Tiki Coasters  
Ngāpuhi T-Shirts  
Pouaka Huawhenua  
Gem Sticker Pad  
Aroha Coasters  
A5 LED Tracing Light Pad  
Taawera Nuku Rau

## LOTS OF ART ITEMS

Metallic Color Pens  
24pk Aquarelle colors  
30pk Coloured markers

**AND LOTS MORE...  
SOME AMAZING GIFTS  
FOR THIS XMAS!**

**100 tickets, \$10 per ticket, 6 draws, 77 prizes!!!**



**HE KOHINGA  
PŪTEA MO  
PAENUKU**

**MEA NEI NGĀ TĀONGA**

**100 TĪKITI - \$10**

**DRAWN 12<sup>TH</sup> OF DECEMBER**

**All proceeds will acquire tāonga for all our tamariki.  
1 ticket per whānau will be distributed for purchase or to be sold.  
So, your tamaiti will come home this week with their 1 ticket.  
Kia manawa tītī, kia manawa mauroa, mo ngā tamariki mokopuna.**

## HE HOKINGA MAHARA...

**WOW! He tau whakamīharo tēnei, e  
2025! E tino mihi ana ki a koutou katoa!**

**He nui ā tātou whakanuitanga i  
tēnei tau:**

**Matariki, Te Hautapu,  
Toitū te Taiao, Ngā Hōia 28,  
Whakapapa, Pepehā,  
Kōhao Rau,  
aha atu, aha atu, ā, ko  
TE HURITAU '10'  
o PAENUKU!!!**

MINI ACADEMY

# Mini Academy Intro

HOLY GROUND, PARUA BAY

PAETATA, PAETAWHITI YR 7 TO YR 10

## EMBRACE THE ESSENCE OF NGĀ POU



*Over three transformative days at Holy Ground, Parua Bay, The Leadership Academy of A Company embraced the essence of Ngā Pou e Toru. Physical training, mental resilience, and spiritual grounding were at the core of their approach. The programme carried a distinct military essence, weaving discipline and camaraderie into every moment.*

*Outdoor activities challenged endurance and teamwork, while reflective sessions strengthened leadership values. Against the backdrop of rugged coastal beauty, participants forged bonds, honed their skills, and embodied the principles that define true leaders.*





## PAETAWHITI

*Mokau  
2025*

This week we took the girls to Mokau marae. We started the year here and as we come to the years end, we thought we would visit again. This time it was just with the girls and gave our year 10 girls in particular an opportunity to lead. Our

leaders for the week were amazing, they showed resilience (it isnt easy telling your peers where to be and what to do), commitment, (always showing up) and perseverance (not giving up when it got hard). They led with great attitudes, and as staff we learned a lot from watching them. It was not what they were expecting ( leadership rarely is) but we hope they came away knowing that they made us all proud. Now that its over, and they look back, we hope they are proud of what they achieved. The leaders for this haerenga were Amelia

Randell, River Houston, Kowhai Wilson, Khaznae Cooper-Brown, Aqueila Pene and Moanarua Natanahira. Thank you girls, you showed us all what good leadership looks like.



## MAREIKURA RISING



## PĀNUI Term 4 Week 8

29/11/2025

We were welcomed on to the marae by the Kohanga and senior kotiro from Te Kura o Whangaruru. We drove, walked up Huruiki with Ngātiwai Kauri Ora, sang to te taiao, tested the water below the marae with Ngātiwai Wai Ora, swam at Ohawini, waded at Oakura beach, ate fish n chips from Skips, created skits and songs, mascots for our platoons, ate, watched a sunrise, talked, laughed, sometimes moaned, but we came home with a smile on our faces ready for a good sleep.

Thank you again Ngātiwai.



## PAERANGI

### Te Kāpehu Whetū Academic Subject Awards

#### Year 11

<b>Cuvier Jackson</b>	Effort in English
<b>Tia-Moana Edwards</b>	Academic Excellence in Te Reo Maori
<b>Jahris Hoori</b>	Effort in English and Mathematics
<b>Ezra Toi</b>	Effort in English and Mathematics
<b>Gazelem Tilialo</b>	Effort in Physical Education and Academic Excellence in English
<b>Kamaia Ngaperea-Tito</b>	Effort in Physical Education, Mathematics, English
<b>Reanna Mackinnon</b>	Effort in Mathematics and Te Reo Maori and Academic Excellence in Physical Education and English



#### Year 12

<b>Julius Tipene</b>	Effort in Mathematics
<b>Jerome Paki</b>	Effort in English and Academic Excellence in Mathematics
<b>Natalie Maihi-Hansen</b>	Effort in Mathematics, English, and Te Reo, Academic Excellence in Business Studies
<b>Tyrece Tuhiwai-Wharepapa</b>	Effort in Mathematics, Physical Education, Business Studies and English, and Academic Excellence in Te Reo Maori



## Year 13

<b>Kahuroa Hohipa</b>	Effort in Te Ao Haka
<b>Narima Ramach</b>	Effort in Te Ao Haka
<b>Ngakupenga Tautari-Herrick</b>	Effort in Business Studies, Academic Excellence in Te Ao Haka and Te Reo Maori
<b>Taihoronukurangi Porter-Lloyd</b>	Effort in English, Academic Excellence in Business Studies and Physical Education
<b>Esther Muriwai University Scholarship</b>	Narima Ramach, Ngakupenga Tautari-Herrick
<b>James Henare University Scholarship</b>	Taihoronukurangi Porter-Lloyd



## Excellent Attendance Awards

Narima Ramach	90%
Ngakupenga Tautari-Herrick	90%
Manawa Armstrong	94%
Ezra Toi	95%
Tyrecce Tuhiwai-Wharepapa	96%
Kruize Cooper-Brown	96%
Natalie Maihi-Hansen	96%



## Commitment to Kapa Haka

Te Ihi Rameka-Kere, Moetahi Shortland, Kamaia Ngapera-Tito, Tia Moana Edwards, Reanna Mackinnon Tyrecce Tuhiwai Wharepapa, Kahuroa Hohipa



## Dedication to Basketball

Te Ihi Rameka-Kere, Jahris Hoori, Moetahi Shortland, Gazelem Tilialo, Ezra Toi, Tia Moana Edwards, Natalie Maihi-Hansen, Julius Tipene, Kahuroa Hohipa



## Consistent achievement in RFL testing

Julius Tipene, Te Ihi Rameka-Kere, Kruize Cooper-Brown, Gazelem Tilialo

**Top Paerangi RFL time** Julius Tipene 9.44mins

**Top RFL run times** Boston Kleiman-Pene 9.32mins

**Sportsman of the year** Kahuroa Hohipa



## Te Kāpehu Whetū Pou Awards

Kia Maori	Tyrecce Tuhiwai-Wharepapa
Kia Tu Rangatira Ai	Natalie Maihi-Hansen
Kia Matau Tuatahi	Gazelem Tilialo
Kia Matau Tuarua	Tyrecce Tuhiwai-Wharepapa
Kia Matau Tuatoru and DUX Ngakupenga Tautari-Herrick	

## 2025 Graduates of Te Kāpehu Whetū

Kruize Cooper Brown

Taihoronukurangi Porter-Lloyd

Manawa Armstrong

Narima Ramach

Ngakupenga Tautari-Herrick

Kahuroa Hohipa – Special Award for 13 years at TKW



## 2026 Pou Arahi

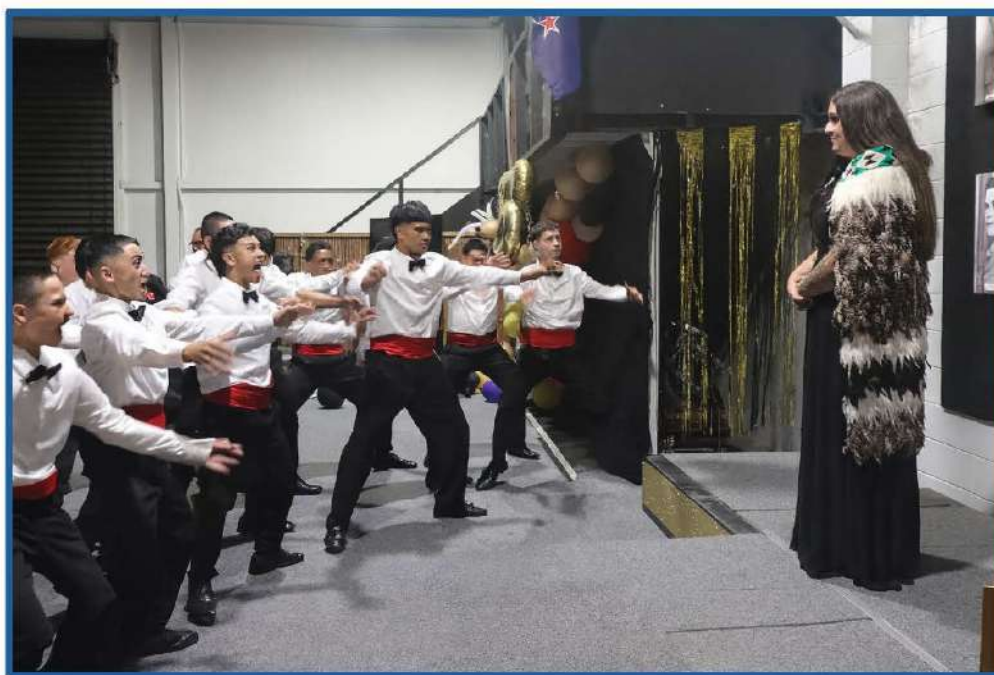


**Jerome Paki, Cuvier Jackson, Jahris Hoori**

**Tia Moana Edwards, Kamaia Ngapera-Tito**

## 2026 Head Girl

**Natalie Maihi-Hansen**





## PĀNUI Term 4 Week 8

29/11/2025



NGĀTI HINE HEALTH TRUST

# Free Whānau Support Services TE KAPEHU WHETU

Maumahara, 40 Herekino St, Whangarei 0110

**Final clinics for the year**

**24 NOVEMBER 2025 | 12:00PM - 4:00PM**

**8 DECEMBER 2025 | 12:00PM - 4:00PM**

### GP HEALTH CHECKS

Free general health check-ups to keep you and your tamariki well.

### NURSE CHECKS

Health monitoring, wellness checks, and preventative care with a friendly, qualified nurse.

**No appointment needed – all whānau welcome.**

**For more info, contact the school office or Orson Misimake**

**027 293 9564**

## KAUPAPA



We believe passionately in our culture, our people, our ākonga, and we know that through hard work, commitment, and focused support they will achieve within the Kura and beyond. We do this hereby acknowledging the 28 Māori Battalion and the price paid for citizenship, so that 'we' can "Navigate Māori Futures".

To do this we commit to success in all its forms:

### **Kia Māori - Be Māori – Be**

An education that validates Māori knowledge and ways of learning.

### **Kia Mātau – Be Knowledgeable – Know**

Encouraging innovation, inquiry, the development of specialised knowledge and skills.

### **Kia Tū Rangatira Ai – Be Rangatira – Do**

Development of strong character and personal excellence, living with mana.

Nā

Raewyn Tipene

POUHERE